





# Memorial Masonry Range

A memorial can be a huge comfort, a place to go where you can remember your loved one, lay flowers and reflect.

Within this brochure is a small selection of memorials. These are available in alternative sizes, materials and colours. **A written quotation will be provided for all memorials.** We are able to offer a full bespoke service should you want something which is not shown in this brochure. Please discuss your requirements with us.

## Inclusive lettering

Each memorial includes ornamentation shown on the memorial, fixing of the memorial, VAT and the number of characters as below. Additional lettering will be quoted as required.

### Headstone & base

75 sandblasted gilded or painted characters.

### Kerb (Traditional) memorial

75 sandblasted gilded or painted characters.

### Cremation and children's memorials & tablets

50 sandblasted gilded or painted characters.

### Vases (Except spun vases)

20 sandblasted gilded or painted characters.

If the inscription is in another language, as part of the permit application we require an English translation. Alternative language inscriptions will need to be supplied. We will confirm this with you at the time of arranging the memorial.

Please note: Kerb/traditional memorials will incur an additional cost for earth to centre or chip bed and chippings. We can advise you of these costs.

## Regulations

Churchyards and cemeteries have regulations that govern the permitted size, material, design of memorials and inscription colour etc. Speak to us for further guidance on the regulations.



# Materials

Within this brochure you will find memorials made in granite, marble, and a range of natural stones. Before making your decision, it is important to understand some of the characteristics of these materials. We can offer guidance on all these materials and discuss their suitability for your needs.

## Where do memorials come from?

They arrive in the UK from China, India and other places worldwide, therefore it can take a long time. Some of the brochure items you can see may be stocked, but if they are not, then your branch will advise you regarding time frames and availability of the material you have chosen for your new memorial regardless of where they come from.

## Granite

Granite is the hardest material we offer and is extremely durable. It is available in a range of colours and is shipped to the UK from abroad. Granite is the hardest of materials and will weather better over time; however, some granites are more porous than others and will tend to show variation in colour when wet. Polishing granite brings out the true natural beauty of this material. A range of finishes can be seen throughout this brochure including polished, honed and rustic effects.

## Italian White Marble

Sourced mainly from Italy. Marble was once a very popular material and is known for its ease of carving. The appearance of this material has been synonymous with the splendour of memorial carvings for centuries. Ideally, marble memorials should not be placed near trees or in damp areas due to its porous nature which can cause it to attract mould, algae and change in colour / characteristics.

## Stone

Materials such as Nabresina, Portland and Sandstone are mainly used in churchyards, but being soft and quite porous will darken and change their characteristic as the years go by.

## Maintenance

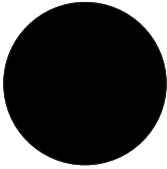
Understanding the maintenance requirement of different materials may help you to make the right choice when choosing a suitable memorial in memory of your loved one ensuring that your memorial stays in the best possible condition for years to come. Our advice and guidance will help you make the choices that are right for you.



# Colour Samples

All our memorials can be created from the materials shown below, however, there are other granite colours available. As all materials used are natural, they are subject to variation in colour, shade, and patterning, the colour swatch images shown below are for illustrative purposes only and will not be an exact likeness.

## Granites



Black



Black Galaxy



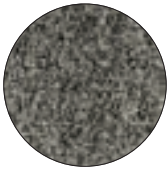
Tropical Green



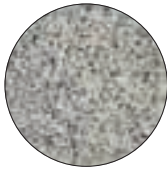
Indian Dark Grey



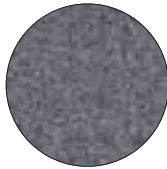
South African Dark Grey



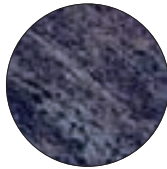
Karin Grey



Silver Grey



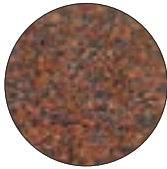
Cera Grey



Bahama Blue



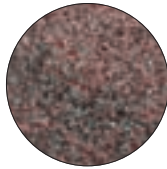
Blue Pearl



Imperial Red

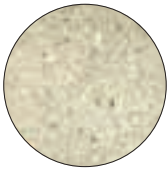


Ruby Red

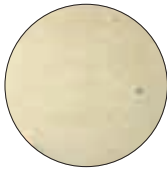


Paradiso

## Natural materials



Nabresina



Portland Stone



Sandstone



White Marble



Slate



# Materials & Designs

## The Inscription

Once you have selected the memorial the next step is to choose the wording for the inscription. A selection of popular inscriptions and verses are shown below but a more comprehensive list is available on request.

## Headings for Inscriptions

**Numbers in brackets indicate character count**

- In Loving Memory of (16)
- In Ever Loving Memory of (20)
- Sacred to the Memory of (19)
- In Ever Affectionate Remembrance of (31)
- Treasured Affectionate Remembrance of (34)

## Quotations and Epitaphs

- Gone but not forgotten (19)
- Rest in peace (11)
- Forever in our thoughts (19)
- I heard the voice of Jesus say ‘come unto me and rest’ (43)
- Not gone from memory, nor from love (29)
- Peace, perfect peace (17)
- We had no chance to say goodbye But for you dear, we will not cry But in our hearts we’ll hide our pain Until some day we’ll meet again (104)
- We cannot bring the old days back Her/His hand we cannot touch But we have such lovely memories Of the one we loved so much (94)

You also have the freedom to compose a message that expresses your own sentiments. Please note all inscriptions are subject to cemetery and churchyard regulations.

Once you have decided on the inscription and confirmed your order, we will send you a proof layout. You can then make any changes if needed before our masons begin their work.

The layout below shows a typical inscription.

**Lead**

A brief introduction

**Name lines**

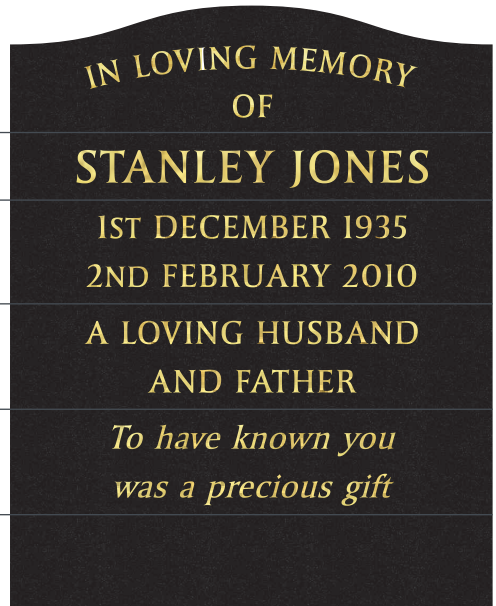
Usually the largest font size

**Date lines**

Showing date of birth & date of death

**Personal Description**

**Epitaph**



# Lettering

You will see different examples of lettering as you read through the pages of this brochure. There are several different inscription finishes including Gilding (Gold Leaf) and painting i.e. white, black, silver etc. Other options such as 'sandblast only' are also available. Once again, we can advise you on the options available.

Please see some popular font options below:

1. **In Loving Memory of** (Roman font)
2. *In Loving Memory of* (Italic font)
3. In Loving Memory of (Plain Black font)
4. In Loving Memory of (Celtic font)
5. **In Loving Memory of** (Comic Sans)
6. **In Loving Memory of** (Albertus (BOLD) font)
7. *In Loving Memory of* (Script)
8. **In Loving Memory of** (Old English)
9. In Loving Memory of (Sans-Serif)
10. **In Loving Memory of** (Arial)

Other fonts and colours are available on request, subject to regulatory approval.

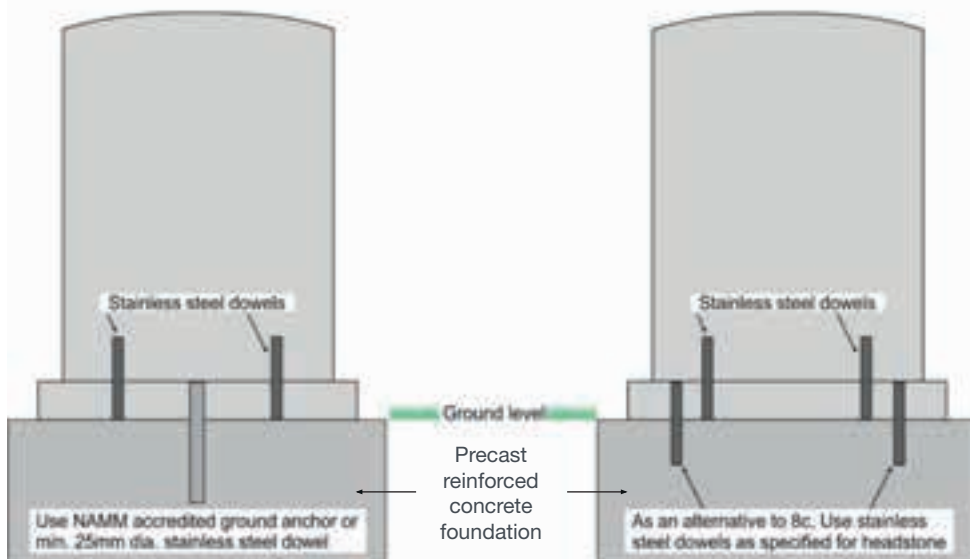
We will advise you if the font style and size is suitable for your chosen memorial.

# Fixing Methods

Our masons ensure all our memorials are constructed and installed to British Standards BS 8415 and comply with The National Association of Memorial Masons & British Register Accredited Memorial Masons regulations.



## Lawn Memorial on Concrete Foundation





**Black Granite**

Ogee shaped headstone with carved hands & base

H	W	D
30"	24"	12"

**MB-114**

# Granite Lawn Memorials

Granite lawn memorials are suitable for use in the lawned sections within a cemetery where only a headstone and base are permitted.



**Dark Grey Granite**

Ogee shaped headstone & base

H	W	D
30"	24"	12"

**MB-100**



**Black Granite**

Round shaped headstone with carved flower & base

H	W	D
30"	24"	12"

**MB-101**



**Black Granite**

Ogee shaped headstone & base

H	W	D
30"	24"	12"

**MB-102**



**Black Granite**

Gates of Heaven headstone & base

H	W	D
30"	24"	12"

**MB-103**





**Light Grey Granite**  
Arc shaped headstone  
with arc shaped base

H	W	D
30"	24"	12"

**MB-109**



**Black Granite**  
Half ogee shaped  
headstone & base

H	W	D
30"	24"	12"

**MB-110**



**Black Granite**  
Ogee shaped headstone & base

H	W	D
30"	24"	12"

**MB-111**



**Black Granite**  
Ogee shaped headstone & base

H	W	D
30"	24"	12"

**MB-112**



**Black Granite**  
Heart shaped headstone & base

H	W	D
30"	24"	12"

**MB-113**



**MB-250b**



**MB-250c**

### **Black Granite**

A traditional ogee headstone with a sandblast and painted crucifix scene. The night sky is inset with crystals.

H	W	D
30"	24"	12"

**MB-250a**



### **Galaxy Black Granite**

A bronze rose complements the reflective galaxy granite.

H	W	D
30"	24"	12"

**MB-251**



### **Galaxy Black Granite**

A modern design with hand tooled rebates flowing down the left edge which can be highlighted in different colours.

H	W	D
34"	30"	12"

**MB-252**





### Black Granite

A double border frames the polished surface and the sandblast rose designs add to the classic look of this memorial.

H	W	D
30"	24"	12"

**MB-253**



### Black Granite

A traditional churchyard shaped top and base.

H	W	D
30"	24"	12"

**MB-254**



### Dark Grey Granite

The rose design at the shoulder is highlighted with pure gold leaf.

H	W	D
30"	24"	12"

**MB-255**



### **Black Granite**

An offset peon top with a single climbing rose sandblasted design.

H	W	D
30"	24"	12"

**MB-256**



### **Ruby Red Granite**

This ogee top has rounded shoulders which are also shown on the front of the base.

H	W	D
30"	24"	12"

**MB-257**



### **Black Granite**

An ogee top with a sandblast church window and bible.

H	W	D
30"	24"	12"

**MB-258**





### **Black Granite**

A half ogee headstone with CNC carved and painted rose design.

H	W	D
30"	24"	12"

**MB-259**



### **Black Granite**

The black granite provides a high contrast to the delicate highlighting on the carved roses.

H	W	D
30"	24"	12"

**MB-260**



### **Coral Green Granite**

The carved and painted daffodils create a contrast to the rustic headstone & base.

H	W	D
30"	24"	12"

**MB-261**



### Coral Green Granite

All polished headstone and based with gilded pin line.

H	W	D
34"	30"	12"

**MB-262**



### Emerald Pearl Granite

Gothic shaped headstone with peace dove.

H	W	D
30"	24"	12"

**MB-263**



### Blue Pearl Granite

Polished headstone and base with sandblasted panel design.

H	W	D
30"	24"	12"

**MB-264**



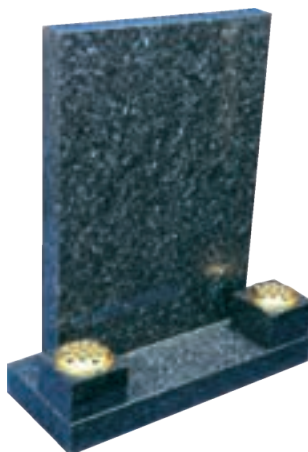


### Avon Grey Granite

Polished headstone and base with carved rose design.

H	W	D
30"	24"	12"

**MB-265**



### Blue Pearl Granite

Polished headstone and base with 2 vases on base.

H	W	D
30"	24"	12"

**MB-266**



### Black Granite

Polished headstone and base with mini kerbs with rope mouldings.

H	W	D
36"	30"	33"

**MB-267**



### **Black Granite**

Upright open-book headstone  
with two vases & base

---

H	W	D
36"	30"	12"

---

**MB-143**

# Open-book Memorials

Open-book memorials feature a slightly raised or angled face on which the inscription is carved or etched. These beautiful memorials often have classic styling and details, but easily lend themselves to contemporary and creative treatments.





### South African Dark Grey Granite

Carved open-book headstone & base

H	W	D
36"	30"	12"

**MB-144**

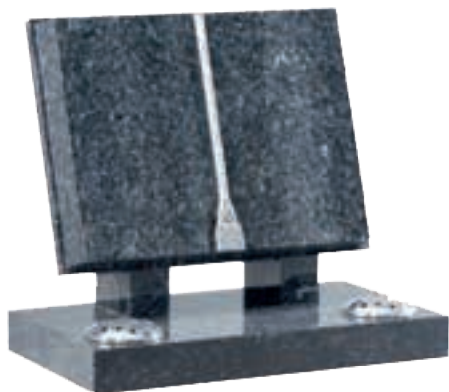


### Mid Grey Granite

Carved open-book headstone with angel above & base

H	W	D
36"	30"	12"

**MB-145**



### Blue Pearl Granite

Open-book headstone, rest & base

H	W	D
24"	30"	15"

**MB-146**



### Black Granite

Book headstone, rest & shaped base

H	W	D
24"	30"	15"

**MB-147**



**Dark Grey Granite**

Round shaped headstone with carved design and rustic finish & base

H	W	D
30"	24"	12"

**MB-179**



**Bahama Blue Granite**

Rustic edged headstone with carved dove & base

H	W	D
30"	24"	12"

**MB-180**

# Churchyard & Rustic Carved Memorials

We offer a collection of attractively carved memorials that are designed to suit the setting of the traditional churchyard. The natural beauty of the materials used is emphasised by the expert carving of our master stonemasons. All memorials are subject to cemetery and churchyard regulations.



**Black Granite**

Ogee shaped headstone with carved roses & base

H	W	D
30"	24"	12"

**MB-181**





**Ruby Red Granite**

Ogee shaped headstone with rustic edges & base

---

H	W	D
30"	24"	12"

---

**MB-186**



**Alpine Brown Granite**

Checked corner headstone with rustic edges & base

---

H	W	D
30"	24"	12"

---

**MB-187**



**Nabresina**

Round topped headstone with rustic edges and carving & base

---

H	W	D
30"	24"	12"

---

**MB-188**



**Sandstone**

Peon shaped headstone with moulded edges & base

---

H	W	D
30"	24"	12"

---

**MB-189**



**Nabresina**

Peon shaped headstone with carved panel & base

---

H	W	D
30"	24"	12"

---

**MB-190**



**Nabresina**

Ogee shaped headstone & base

---

H	W	D
30"	24"	12"

---

**MB-191**



**Portland Stone**

Ogee shaped headstone with carved design & base

---

H	W	D
30"	24"	12"

---

**MB-192**



**Portland Stone**

Shaped headstone with shaped base and carving

---

H	W	D
30"	24"	12"

---

**MB-193**





### **White Marble**

Carved topped headstone  
& base

<b>H</b>	<b>W</b>	<b>D</b>
30"	24"	12"

**MB-128**

## **Marble Memorials**

Marble has long been used to create memorials to the notable people in history. But its ability to enable elaborate or subtle carving also makes it an ideal material to create a beautiful headstone for your loved one.

In Scotland, we do offer new marble memorials, additional inscriptions or maintenance for existing memorials.

Marble is a soft stone and therefore more prone to deterioration due to the Scottish climate, making granite a more durable choice.

If you wish to have a marble memorial or already have one, then please contact us to discuss needs.



**White Marble**

Ogee shaped headstone & base

H	W	D
30"	24"	12"

**MB-129**



**White Marble**

Carved top headstone & shaped base

H	W	D
30"	24"	12"

**MB-130**



**White Marble**

Carved top headstone & shaped base

H	W	D
30"	24"	12"

**MB-131**





**Dark Grey Granite**

Vase

H	W	D
7"	7"	7"

**MB-162**

# Vases

Granite or marble flower vases can be added to any of the memorials shown in this brochure. They are generally crafted from the same materials as the main memorial although contrasting colours or materials can be selected, if desired.



**Black Granite**

Vase with sandblasted design & stand

H	W	D
8"	11"	8"

**MB-163**



**Balmoral Red Granite**

Spun vase (shapes vary) no inscription

H	W
12"	7"

**MB-164**



**White Marble**

Vase

H	W	D
6"	6"	6"

**MB-165**



**Black Granite**

Spun vase (shapes vary) No inscription

H	W
12"	8"

**MB-166**



**Black Granite**

Vase with carved flower

H	W	D
6"	6"	6"

**MB-167**



### **Silk Blue Granite**

Pebble tablet with carved roses

H	W	D
3"	18"	15"

**MB-148**



### **Black Granite**

Cremation memorial

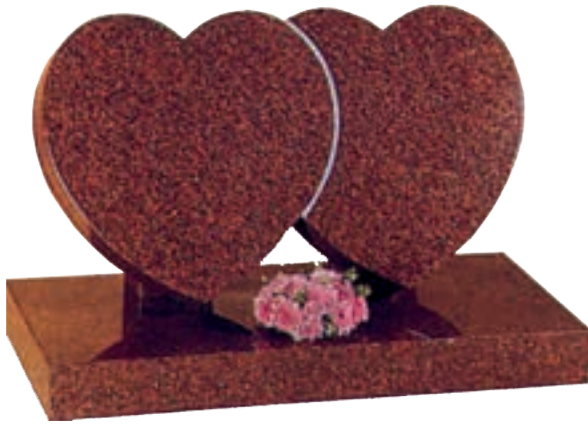
H	W	D
21"	24"	12"

**MB-149**

# **Cremation Memorials**

Our range of memorials for use in the ashes plots within a cemetery are discretely styled but offer the same opportunities for applying your own personalised inscription as a traditional lawn memorial.





**Ruby Red Granite**

Double heart cremation memorial

H	W	D
20"	24"	12"

**MB-150**

**Black Granite**

Carved open-book & vase cremation memorial

H	W	D
14"	24"	12"

**MB-151**



**Dark Grey Granite**

Heart tablet and vase cremation memorial

H	W	D
14"	24"	12"

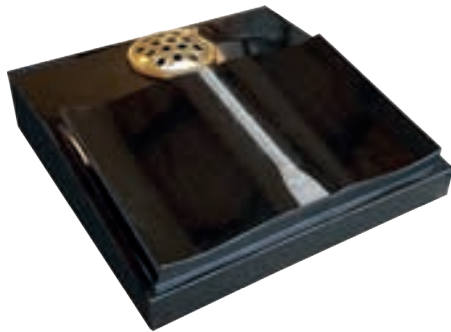
**MB-152**

### Dusky Grey Granite

Cremation memorial with rustic edges

H	W	D
21"	24"	12"

**MB-153**

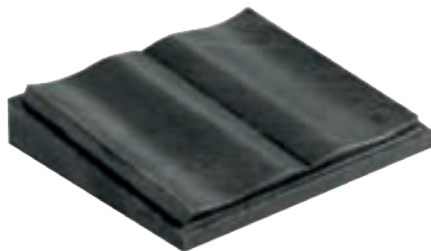


### Black Granite

Desk tablet with carved open-book

H	W	D
4" - 2"	18"	18"

**MB-154**



### Tropical Green Granite

Wedge tablet with carved open-book

H	W	D
4" - 2"	18"	15"

**MB-155**



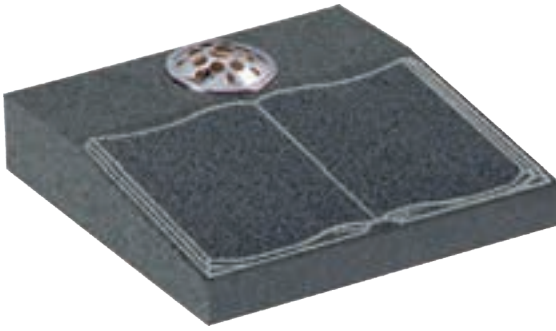
### Black Granite

Desk tablet

H	W	D
4" - 2"	18"	18"

**MB-156**



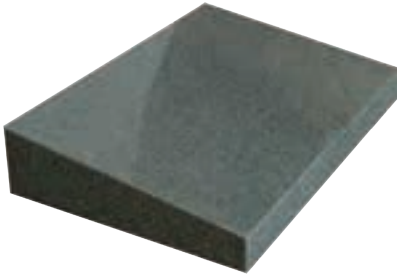


**Mid Grey Granite Honed**

Desk tablet with sandblasted book.

H	W	D
4" - 2"	18"	18"

**MB-157**

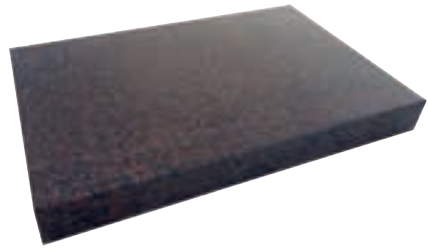


**Karin Grey Granite Honed**

Wedge tablet

H	W	D
3" - 2"	18"	15"

**MB-158**

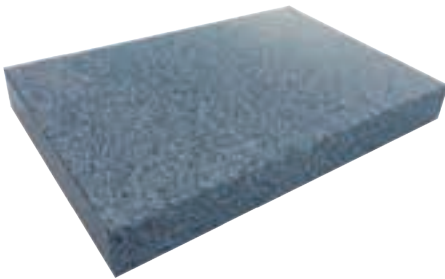


**Balmoral Red Granite Honed**

Flat tablet

H	W	D
2"	18"	15"

**MB-159**

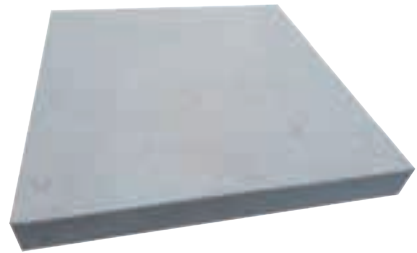


**Silver Grey Granite Honed**

Flat tablet

H	W	D
2"	18"	15"

**MB-160**



**Nabresina**

Flat tablet

H	W	D
2"	18"	18"

**MB-161**

# Etched & Sandblasted Designs

Below shows a small sample of the designs that can be applied to your memorial, either by etching or sandblasting. If you would like a specific image such as a military crest, sporting emblem or personalised illustration, please ask us for further details.

## Traditional Sandblasted Designs



## Contemporary Sandblasted Designs



## Etched Designs



The addition of artwork on a memorial can create a unique and fitting tribute. Our team of skilled artists and masons can combine a number of techniques to produce high quality designs appropriate to the person being remembered. The following examples represent just a small number of the designs available.

Sandblasting and Laser etching remain the most common method of producing an image. These designs can then be highlighted or painted to create something personal and meaningful.

We can also create Bespoke Designs, please ask for further information.





# Children's Memorials

We can support you to arrange a bespoke memorial to enable you to create a unique tribute for your child.



**Tigger™ Black Granite**  
A fully carved and painted “Tigger”™ leaning over a polished heart.

H	W	D
27”	24”	12”

**MB-269**



**Black Granite**  
A headstone and garden kerb set. The double arch design provides ample space for both inscription and design.

H	W	D
27”	30”	30”

**MB-270**



**Dark Grey Granite**  
This oval headstone shaping is extended to incorporate the painted bunny.

H	W	D
19”	24”	12”

**MB-271**



**Lunar Grey Granite**  
This child’s teddy and blanket can be painted to suit your personal choice.

H	W	D
21”	24”	12”

**MB-272**



**Black Granite**

The addition of painted images to this book and vase rest create an ever popular memorial. A full range of images are available.

H	W	D
14"	20"	14"

**MB-273**



**Black Granite**

Football 9" diameter made in contrasting granites. The scarf can be painted to show any team colours, suitable for a football fan of any age.

H	W	D
36"	24"	18"

**MB-274**



**Black Granite**

Ogee headstone with a hand painted scene of the Teddy Bear's Picnic.

H	W	D
30"	24"	12"

**MB-275**



**Abbey Grey Granite Football Shirt**

This football shirt is shaped all round and the material and badge can be added to reflect a favourite team's colours. Prices vary.

H	W	D
33"	24"	18"

**MB-276**



# Statuettes, Ornaments & Accessories

A variety of religious/traditional ornaments and accessories are available with which to complete your memorial.

## Oramental Statuettes



Angel  
14"  
**MB-197**



Sacred  
Heart  
24"  
**MB-195**



Madonna  
4"  
**MB-196**



Dove  
H W D  
3.5" 2.5" 5"  
**MB-194**

## Ornaments



Plain  
Crucifix  
12"  
**MB-201**



Floral  
Crucifix  
12"  
**MB-203**



Enclosed  
Candle Holder  
H W D  
9.5" 5.5" 5.5"  
**MB-202**

# Photo plaques

We can add a photo plaque to nearly all memorials, subject to regulations and the type of memorial ordered. Photo plaques are ceramic and some are imported from abroad to provide best quality and have a UV protection to protect against sunlight.

Photo plaques are available in various different shapes and sizes. The three main types are plain, with a pin line or with a frame as below.



Plain Edge



Pin Line



Framed

# What's protected with StoneGuard?

StoneGuard is an 'all risks' policy. This means it will cover the cost of repair if things like damage from lawnmowers, falling trees and subsidence occur; or preventative measures taken by local councils when they judge a memorial stone to be unsafe and you are responsible for putting things right. With StoneGuard, you'll get the reassurance that your memorial is covered against:

- Accidental damage, including vandalism (malicious damage)
- Storm
- Theft or attempted theft
- Impact (e.g. by a mower)
- Flood and frost
- Falling trees
- Subsidence
- Staining other than by natural weathering caused by tree sap, bird or animal droppings, or flowers

It also covers you against damage to or re-fixing and realignment of the memorial stone directly arising from faulty or defective workmanship by any stonemason whose business has ceased trading. Plus, with our Memorial Stone Policy (please note: this is not applicable to our All Risks Policy) legal responsibility to pay damages up to £2,000,000 arising from ownership of the memorial which results in accidental injury of any person, or damage to property.

For a quotation for memorial insurance please contact Stoneguard by telephone on 0800 634 7078 or online at [www.bridgeinsurance.co.uk/scheme/stoneguard](http://www.bridgeinsurance.co.uk/scheme/stoneguard). quoting your chosen funeral director as a reference.



Peace of Mind, Set in Stone



# What is your typical ordering process?

## New Memorial Order

Following your enquiry we will arrange a suitable time and place for you to meet with us and discuss memorial options, local cemetery/churchyard regulations and costs.

## Removal of Memorial for a Burial to Take Place

In some instances memorials may need to be removed for a burial to take place. We can arrange this for you. A quotation will be provided once the burial has taken place should you wish to have any additional inscription, additional works or re-fixing of the memorial \*\*\*. (fees may be applicable)

## Inspection of an Existing Memorial on a Grave

We can arrange an inspection of an existing memorial which is in a cemetery or churchyard. Inspections are completed to provide a quotation and can be provided for a number of different reasons for example, an additional name to be added to a memorial following an interment of ashes, renovation works etc.

## Memorial Order Process

**Step 1:** A letter/email including a full quotation, inscription sheet/layout, permit application and our Terms and Conditions will be sent to you. Alternatively, we can arrange a suitable time to meet you to go through the memorial paperwork in our branch.

**Step 2:** On receipt of the signed documentation and the deposit\* amount we will progress your order.

**Step 3:** The permit application will be sent to the relevant local authority/cemetery/church for approval. Once the permit has been approved, we will order the memorial or progress the additional works and advise you of this.

**Step 4:** We will then send you a layout for approval which you will need to check to ensure this is correct, sign, and return to us. If you have any amendments, you can advise of these at this point, and we will then send you a revised layout for approval.

**Step 5:** Once this is completed and memorial has arrived, we will provide you with a timescale\*\* for completion, dependant on cemetery regulations and ground settlement\*\*\*.

**Step 6:** Once the memorial has been completed, we will contact you and if possible, email you a picture of the memorial on the grave. We will then send you a final invoice.

\*Deposit payment is 50% cost of the memorial plus all third-party fees i.e., permit fees, interment of ashes fees etc.

\*\* We will provide you with an estimated time frame for completion which can be subject to change due to worldwide shipping challenges.

\*\*\*Ground settlement can vary per local authority/cemetery/churchyard, we will advise you of the time frame.

NB: We will update you at each stage however, if you would like an update, please contact us.

